



# NI In the News

## September 1, 2015—Grainger

### INSIDE THIS ISSUE:

President's Message 4

Bed Bugs in the Workplace 5

OSHA Training 7

20 Questions 8 & 11

Mooseheart Thank You 9

#### About our presentation:

Grainger will be presenting on their experiences and approach for the construction of their new stand-alone data center built on their corporate campus in Lake Forest. This building became the first project certified under latest LEED Version 4. Discussion will include the use of an integrated design approach that included all stakeholders, highlights of some of the energy efficient concepts utilized including a very large heat wheel as part of the energy design of the HVAC system, and how the building design was designed for modular growth that enables future expansions to occur with limited interruptions to the operations of the data center.

#### About our Speakers:

Jae Shim joined Grainger in 2013 as a Project Manager in the Real Estate Department. In addition to being the Project Manager for the data center project, Jae has managed the Office Expansion Project for Grainger's Panama operations and the Fort McMurray Branch relocation in northern Alberta Canada. Prior to joining Grainger, Jae worked for Lend Lease Inc, and Kenny Construction Company where he was involved with the University of Chicago Utility Plants Project and the ComEd West Loop Project. Jae received his Bachelor of Science in Civil Engineering from the University of Illinois.

Damon Boyd joined Grainger in 2013 as an Infrastructure Engineer in the Data Center Engineering Department, and has since transferred to the facility Real Estate organization as a Regional Property Manager. He has acquired a BS of Electrical Engineering in 1999 from ITT. He also has a variety of IT certifications varying from network design to data center integrated systems. At Grainger, Damon's primary responsibility has been focused on the reliability, sustainability, and optimization of Grainger's Data Centers and Computer rooms. Prior to joining Grainger, Damon has worked for Motorola, Fermi National Laboratory, Caterpillar, and Microsoft in roles spanning from product line troubleshooting and prototype design to critical infrastructure management.

#### About our Site:

W.W. Grainger, Inc. is a business-to-business distributor of products used to maintain, repair and operate facilities. Millions of businesses and institutions worldwide rely on Grainger for products like safety gloves, ladders, motors and janitorial supplies and services like inventory management and technical expertise. These customers represent a broad collection of industries including healthcare, manufacturing, government and hospitality. They place orders over the phone, at local branches, online and using mobile devices. More than 4,500 key manufacturers supply Grainger with 1.4million products made available to customers through Grainger's branches and distribution centers or sourced through a network of suppliers. For more information on Grainger, visit [www.grainger.com/investor](http://www.grainger.com/investor).

See map on page 17 for parking information.

\*\*All no shows will be billed.

Check us out on:



# Sponsors

Platinum Sponsors:

**360**Facility®



Shaw **S | C**

## Gold Sponsor:

 The Mohawk Group

KARASTAN  
CONTRACT

Lees®

BIGELOW  
COMMERCIAL

*Interface* FLOR™

**KAYHAN**  
spaces that inspire

## Silver Sponsor:

 **CrateXpress**®  
1-877-438-2971 [www.cratexpress.com](http://www.cratexpress.com)  
Green Solutions that Move You

**GRAEBEL**®  
PEACE OF MIND. WORLDWIDE.™

## From the President....



Wow! This month is flying by! Labor Day is almost upon us. I hope everyone has fun plans for the long weekend. The Eighth Annual Showcase & Raffle was a success! We had 22 Raffle Prizes and 20 Exhibitors. Thanks to all of you who participated. FM's, please keep in mind some of our knowledgeable associates when you have a need at your facility. Kudos to Bob Ditsch & Kathy Daloia for organizing this entertaining event.

Our September 1<sup>st</sup> meeting will be held at Grainger in Lake Forest. Grainger will be presenting their experiences and approach for the construction of their new stand-alone data center built on their corporate campus. The tour will be interesting also. Please pay attention to the map that will be provided in the invite and website so you will know where to park and enter the building.

A good time was had by all at our Service event at Mooseheart on August 15th. Members from both IFMA-NI & IFMA Chicago participated in painting, planting and spreading mulch in the playground area. The people who painted the fence by the stable met a new friend, Bullet. Bullet, the donkey, is a local celebrity at Mooseheart. We all enjoyed a lunch of hamburgers and hot dogs after our hard work. It was fun to see the kids of our members chipping in too. You are never too young (or too old) to volunteer! We appreciate the efforts of Dave Biggus for the months of planning this event.

I would like to add congratulations and best wishes to Keith Strutz, who will be retiring at the end of the month from Mooseheart. He was one of the first people I met when I joined IFMA and made me feel welcome. Lucky for us, he will be continuing his membership with IFMA-NI.

World Workplace is quickly approaching. Early bird registration is over, but there is still time to register and book your rooms. We will be sending out details for our party soon. We will also have IFMA-NI pins to pass out this year. I look forward to seeing Denver for the first time!

Please keep sending in articles and ideas for monthly meeting sites! We appreciate your involvement.

The phrase that pays is "Rocky Mountain High". (Get it?)

Sincerely,

Ann Del Fiacco  
(Madam President)



Don't forget to get "LinkedIn" with our chapter IFMA NI Chapter Group

## Responding to Bed Bugs in the Workplace

The number of bed bug incidents in commercial and office settings has been steadily increasing and experts agree that this trend will continue for the foreseeable future. According to the NPMA Bugs Without Borders Survey, reports of bed bugs in office buildings have increased from 18 percent in 2010 to 36 percent in 2013. As bed bugs continue to inhabit these non-traditional settings, employees have started logging complaints and filing reports ranging from concerns directed to their HR departments all the way to formal complaints filed with OSHA and Departments of Public health. While bed bugs are impossible to keep out of the workplace, it is extremely important to have a thorough understanding of the risks and responsibilities associated with this issue.

There are a variety of potential liability risks associated with bed bug infestations in the work place including:

Violation of OSHA laws—while OSHA laws may not mention bed bugs specifically, they do require proper housekeeping and protection of employees from foreseeable risks.

Negligence/violation of health and building codes which require protection of the premises from infectious pests

Mental distress lawsuits—employees may file lawsuits as a result of anxiety caused by bedbugs in the workplace

Allergic reactions or perceived health risks associated with treatment strategies

Discrimination, harassment, or retaliation claims—employees may feel singled out if they are targeted for possibly bringing in bed bugs

Worker's compensation—some people can develop skin infections, significant allergic reactions, or anxiety issues as a result of bites which could cause them to be eligible for worker's comp claims

Third party claims—if customers or employees are exposed to bed bugs at work and claim to have brought them home, 3<sup>rd</sup> parties such as family members may file claims.

Other risks to employers and building managers arising from bed bug issues in the work place include loss of employee productivity, reduced employee morale, and threats to brand names and corporate image due to the negative stigma associated with bed bugs. Due to the complex environment associated with office settings, bed bugs often go undetected for long periods of time. Early detection is rare because visual inspection is difficult, time consuming, and prone to failure. By the time visual detection occurs, the issue may be dispersed over a wide area, identifying the point of introduction may difficult if not impossible, and reintroduction of the pest is a constant possibility. Canine scent detection can be an effective, efficient and reliable alternative to visual inspections but special scheduling considerations will need to be taken to insure off-hours access. Keep in mind that there is no 100% effective method of detecting and treating bed bug infestations, but rather a cooperative and integrated approach is critical to manage this particular pest.

If bed bugs are impossible to prevent, and there are numerous financial, tangible, and intangible threats associated with them, how can employers and property managers protect themselves from these risks? The key to avoiding the legal, financial, and moral pitfalls of bed bugs in the office is to be prepared ahead of time. Bed bugs require both an immediate and long term action plan to be battled effectively. It is critical to have pre-established relationships and service agreements with both a qualified canine inspection company as well as pest control treatment company that have commercial bed bug experience. Both of these should be able to provide rapid response and service turnaround times for emergency call outs, as well as management plans for regularly scheduled preventative services. Employers and building office managers alike should have detailed written bed bug protocols that outline both preventative measures and incident response protocols that include:

- Regularly scheduled inspections based on the specific traits of each floor/building
- Inspections of vacant areas prior to tenant occupation to provide documentation of due diligence
- Educational programs for employees, tenants, and contractors (i.e. cleaners, painters)
- HR protocols for dealing with employee responses to bed bug incidents as well as reintroduction issues
- Action response plan for bed bug sightings or employee complaints—including reporting, specimen collection, inspection, treatment, and reinspection procedures.
- Lease/contract language that includes bed bug incident reporting requirements, after-hours access for inspection and treatment permissions, responsibilities for common/public areas (fitness centers, cafeterias, elevators etc)

The bed bug epidemic will continue to expand throughout the U.S. for the foreseeable future. In our litigation focused society it is critical for employers and office managers to be prepared to show their due diligence in order to protect themselves from liability associated with the battle against this pest. The best way to do this is to stay informed and prepared through detailed planning, written protocols and extensive documentation.

## Continued from previous page....

The bed bug epidemic will continue to expand throughout the U.S. for the foreseeable future. In our litigation focused society it is critical for employers and office managers to be prepared to show their due diligence in order to protect themselves from liability associated with the battle against this pest. The best way to do this is to stay informed and prepared through detailed planning, written protocols and extensive documentation.

*Canine Detection and Inspection Services [www.canineinspection.com](http://www.canineinspection.com) is part of a network of industry leaders dedicated to the advancement of resources and technologies available for the management, identification, and treatment of bed bug incidents nationwide. We provide our clients with the most effective, cost efficient protocols and solutions backed by research and standards to protect the health and safety of their employees, clients, and brand name, through reducing their exposure to risk created by bed bug incidents.*

*Article written by: Carla Wagner, Operations Manager, Canine Detection and Inspection Services, Wild Goose Chase*

---

**Have a new product or service to share?  
How about an innovative way for solving a facility problem?  
Win any awards lately?  
We are always looking for articles for our newsletter!**

**Please share with your fellow managers and associate members items of interest in your field.**

**Article Guidelines:**

**Article length between ½ page and 2 pages-can include pictures.**

**Written in Word format-no PDF.**

**Make sure you include credit information at end of article.**

**Submission due by the 20<sup>th</sup> BEFORE the month the newsletter is printed. For example, March newsletter needs articles by Feb. 20<sup>th</sup>. Otherwise, we will hold for following month.**

**Any ???Please contact Jan Wemple, Newsletter coordinator at:**

**[jwemple@moorelandscapes.com](mailto:jwemple@moorelandscapes.com) or 847-774-1250.**

**Or Kathy at: [chapteradministrator@ifmani.com](mailto:chapteradministrator@ifmani.com)**



## Safety, Health, Environmental and OSHA Compliance Training

Founded in 1988, the *Chicagoland Safety, Health and Environmental Conference* has become the premier regional training conference for OSHA compliance training, and training in general safety, the environment, industrial hygiene and EHS professional development. In 2014, the conference drew more than 1,000 session attendees, speakers and vendors from 13 states and 2 foreign countries.

The September 21-24<sup>th</sup> conference is sponsored by three local chapters of the American Society of Safety Engineers, local sections of the American Industrial Hygiene Association and the Alliance of Hazardous Materials Professionals in association with OSHA, Northern Illinois University College of Engineering and Technology and the National Safety Education Center. The conference is designed for professionals who have responsibilities related to safety, health, training, and environmental management. Other key personnel such as company or building owners, property and facility managers, safety committee members, supervisors, human resource managers, municipalities, and others are encouraged to attend.

This year's *Chicagoland Safety, Health and Environmental Conference* will offer more than 50 current issue dynamic, professional training sessions and workshops presented by proven, knowledgeable speakers. Training sessions are 1.5 hour, half-day or all day depending upon the topic. Training sessions will focus on OSHA compliance; Ergonomics; Marijuana in the Workplace; Conceal-Carry Laws in Illinois; Civil and Criminal Liability Issues; Emergency Services Planning; OSHA Electrical Safety; Mold Assessment & Remediation; Boilers, Power Plants and Strategic Energy Management; Changing Chemical Product Rules; Noise Exposure; Incident Investigation; Respiratory Protection; Ventilation; Industrial Hygiene and other timely topics. Visit the conference website [www.chisafetyconf.org](http://www.chisafetyconf.org) to register and view a complete list of training sessions being offer this year.

The keynote speaker is Mr. Nick Walters, OSHA Regional Administrator who will provide valuable insight and perspective regarding current safety and environmental issues facing business, industry, local governments and other types of businesses and service providers.

The Wednesday business EXPO will showcase great products and services followed by a Networking Social. Visit the conference website [www.chisafetyconf.org](http://www.chisafetyconf.org) for information about promoting your product or service at the conference.

The conference week concludes with the *Chicagoland EHS Golf Outing* on Friday September 25<sup>th</sup> at The Village Greens of Woodridge Golf Course. This is always a lot of fun and an opportunity to network with other professionals. Registration and information about the outing and golf sponsorship opportunities can be found at [www.ThreeRivers.ASSE.org/events](http://www.ThreeRivers.ASSE.org/events) .

We look forward to seeing you at the *Chicagoland Safety, Health & Environmental Conference* and the *Chicagoland EHS Golf Outing*.

Contact Ken Orms, [k.orms@att.net](mailto:k.orms@att.net) if you have additional questions.

## 20 Questions with Jim Gracey, CFM

**Name:** Jim Gracey, CFM  
**Company:** Textura  
**Position:** Facilities Manager  
**How long with IFMA:** Member since January of 1997

**Favorite hobbies:**  
 Home improvements, singing, being outdoors in the summer.

**Favorite book:**  
 I most enjoy non fiction in particular I have read a significant number of biographies of entertainers and I also enjoy historical books. I have read everything from Charlie Chaplin and W.C. Fields to Jane Lynch and Jim Gaffigan and many in between. Among my favorites was a biography of Benjamin Franklin and a piece of historical fiction, The Pillars of The Earth.

**Currently reading:**  
 I am currently reading "A Peoples History of the United States by Howard Zinn (it's a little slow and dry) and I am also in the middle of "A Fist Full of Collars" by Spencer Quinn

**Favorite food/cuisine:**  
 My favorite food is Pizza!!! There are so many choices you could have it every night of the week and never repeat the same one.

**Favorite restaurant:**  
 That's a tough one I have discovered a great buffet in DeKalb called China House. (Who doesn't love a good Chinese Buffett?) And Mongolian Grill is always a good place!

**Describe your family growing up and now:**  
 My immediate family was on the small side but I have a large extended family. The same holds true today, I have two adult children and a large extended family.

**Hometown:** I was born in Chicago and moved to Bensenville in the 1960 where I grew up and went to High School. Go Bison's!

**Current residence:** I currently live in Downers Grove and my kids went to Downers Grove South. Go Mustangs!

**Favorite sport to play:**  
 The only sport I participate in is bowling or pool. I was never much of an athlete.

**Favorite sporting event:**  
 I enjoy watching baseball and hockey

**Favorite team:**  
 I have been a Hawks fan since the 1960's

**Cubs or Sox?**  
 This is a silly question the Cubs of course!

**Morning or night person:**  
 Even though I enjoy getting an early start at the work I am definitely not a morning person. (Just 5 more minutes!)

If I won the lottery, I would have a custom home built then I would travel! I would travel Europe and visit historic places and see the "Wonders of The World" I would also go on some cruises.

**Three words I would use to describe myself:**  
 Happy. Loyal. Inquisitive.

**Favorite movie:**  
 I love comedies. Caddyshack, and Mel Brooks', History of The World, come to mind.

**Favorite TV show:**  
 One of the greatest TV Shows of all time is the Dick Van Dyke Show. The show was so incredibly well written it is timeless.

**Most people don't know I:**  
 I once cooked Dinner for Gavin McCloud

**One goal that I would like to accomplish during my lifetime:**  
 I would love to learn a new language someday.

**Hero or role model (or an influential person in my life):**  
 I don't know that I have a role model per se. I would credit my parents for having the most influence on who I am today.

**Favorite thing to do in the summer:**  
 My favorite thing in the summer is to be outside and go sightseeing. Nothing better than getting in the car and going for a ride.



Continued on next page....



## Jim Gracey (Continued)

**If I could visit any place in the world, it would be:**

Europe, because there are so many fascinating historic sights to see and so many scenic landscapes to see.

**Favorite city to visit:**

I have only been there once but my favorite city was London. As I mentioned previously I love visiting historic sights and meeting with and talking to new people from different backgrounds.

**Favorite vacation spot:**

I love going on a driving road trip for vacation. In recent years I have driven west to L.A. east to New York south to New Orleans, and north the UP of Michigan. Last week we just returned from a trip to Nashville. Another favorite vacation spot was Gatlinburg TN.

**If I could trade places with one person for a day, it would be:**

I have no idea. I enjoy being myself.

**I'd like to have dinner with:** Abraham Lincoln

**Songs(artists) are on my iPod/phone:**

I have everything on my iPhone from Black Sabbath and Conway Twitty to the Partridge Family and Glee. My favorite genre of music is Broadway Musicals.

## Mooseheart—Community Service Day

A BIG THANK YOU to everyone who helped make our Mooseheart event a success. The four projects - Baby Village weed n mulch, PJO planting bed ("Centre for Tomorrow"), Admin building planting bed, and the illustrious, now gleaming Stable Fence - were all completed, miraculously before lunch! Way to go!! I know it was a hot



one, and I really appreciate everyone's efforts. And I'm sure the kids and residents at Mooseheart do too. All the areas looked just like we hoped they would.

So it was a surprise Retirement Party for Keith Strutz too! Love it when that happens. Thanks for all your hospitality Keith. This seems like a real win-win. Good luck going forward



# More Mooseheart Pictures



## 20 Questions with Kathy MacIntosh-Eddy

**Name:** Kathy MacIntosh-Eddy  
**Company:** Phoenix System & Service  
**Position:** Account Executive  
**How long with IFMA:** Less than a year and looking forward to meeting more members

**What are your favorite hobbies?**  
 Horseback riding, gardening, anything around water

**What is your favorite book?**  
 No favorite, but enjoy sci-fi most.

**What are you currently reading?**  
 Nothing very worthy right now. A semi-historical sci-fi fantasy to fall asleep with and a humorous audio book in my car.

**What is your favorite food/cuisine?**  
 It's mood and convenience dependent!

**Favorite restaurant?**  
 I don't have one, but I wish Trader Vic's would come back.

**Describe your family growing up and now:**  
 I have three brothers. I moved to Chicago 22 years ago and don't have any local family except my 18 year old daughter and 22 year old son, but stay in touch with everyone around the country.

**Hometown:** Indy

**Current residence:** Chicago northwest side in a neighborhood called North Mayfair

**What is your favorite sport to play or watch?**  
 I had a horse as a teenager, then leased a horse as an adult and later learned to jump. Being from Indy, I've been to over 20 Indy 500's. I love college basketball.

**Favorite team?** IU

**Cubs or Sox?**  
 I used to come up for Sox games from Indy, but now live on the north side. If the old Sox stadium still stood, it would be a toss up. Now I like taking customers to Wrigleyville; I like the atmosphere.

**Are you a morning or night person?**  
 5:30am...let's get it done.

**What would you do if you won the lottery?**  
 Let's assume this is a lot of money... I'd buy a horse farm and add on an animal rescue facility and hire loved friends to run it and pay them LOTS of money. I'd allow my daughter to transfer to whatever college she wants (as if DePaul isn't enough money) and eventually move her to LA to pursue her acting/singing career.

**What three words would you use to describe yourself?**  
 Dedicated, focused, funloving.

**What is your favorite movie?**  
 Blazing Saddles or Princess Bride

**TV show?** Walking Dead!

**What is one thing that no one in IFMA knows about you?**  
 I wanted to be a veterinarian.

**What is one goal that you would like to accomplish during your lifetime?**  
 To have a home with horses on the property.

**Who is your hero (or an influential person in your life)?**  
 My father has had the most influence on me by far. I respect him to no end.

**What is your favorite thing to do in the summer?**  
 Anything outdoors, but the highlight is Lollapalooza. (You're never too old.)

**If you could visit any place in the world, where would it be & why?**  
 Scotland and Ireland because they're in my bloodline.

**What is your favorite vacation spot?**  
 My father took us descendants to Maui a few years ago and rented a house and a few cars. It's the only vacation I've had a really hard a hard time leaving.

**If you could be anyone beside yourself, who would it be?**  
 Maybe my Great Aunt Shirley. She's kind, thoughtful, delightful, hilarious, attentive and smart, and has done a lot in her lifetime.





**SEVEN BRIDGES**  
GOLF CLUB

# 26th Annual Northern Illinois IFMA Golf Outing

September 10, 2015

New location!!

Seven Bridges Golf Club

1 Mulligan Dr

Woodridge, IL

[Click here for the invitation!](#)

---

## Kathy MacIntosh-Eddy

---

**What songs(artists) are on your iPod/phone?**

I'm a hard rock fan.

**If you had access to a time machine, where & when would you travel to?**

Today could be a good day!

**What are your pet peeves?**

Ignorance and people who chew with their mouths open.

Building Services Lead

**Company** McCain Foods USA Inc.

It's a fresh approach. McCain Foods believes that when you start with only the freshest and healthiest ingredients, add a commitment to quality, consistency and convenience, the product will be outstanding—every time. That is our recipe for success and it is the reason that we continue to be a world leader in providing superior food of uncompromising standards. The same is true of our people. We seek only the best. If you are the very best at what you do and count integrity, sincerity and responsibility among your key virtues, then you might be a good fit for our team. If you're ready for a fresh approach to work, then we're ready for you. McCain Foods— Grow with us!

**SUMMARY:** This position will provide back up to Manager, Building Services and will back-up all positions in the Building Services department when necessary. This position is responsible for work tickets including assignment, follow up and closure as well as being a key contact for employee questions in regards to building issues and events.

- Associate degree in business administration or related field preferred.
- Basic knowledge of facilities management and well-rounded general business operations
- Ability to negotiate pricing and services with outside vendors preferred.
- Exceptional verbal/written communication skills
- Excellent customer service skills
- Strong organizational skills
- Ability to work independently with minimal supervision
- Proven follow-up skills
- Ability to interact with all levels of the organization
- Strong ability to maintain confidentiality

Minimum 2 years prior building services or related business experience. Minimum 3 years preferred.

**The physical demands described here are representative of those that must be met by an employee to successfully perform the essential functions of this job. Reasonable accommodations may be made to enable individuals with disabilities to perform the essential functions.**

- While performing the duties of this job, the employee is frequently required to move furniture and lift boxes of up to 50 pounds
- While performing the duties of this job, the employee will spend some time in refrigerated space storing perishable product
- While performing the duties of this job, the employee is frequently required to use hands and fingers to operate a computer keyboard, mouse and telephone keyboard and talk or hear.
- Requires visual acuity to focus on desktop and/or laptop computer screen. Requires standing and sitting for prolonged periods of time, talking and listening.

McCain Foods USA is an Equal Opportunity Employer providing a drug free, smoke free work environment and a commitment to Diversity. All qualified applicants will receive consideration without regard to race, color, religion, sex, sexual orientation, age, national origin, non-job related disability or veteran status, or other characteristics protected by applicable federal, state or local laws.

[jackie.marcheschi@mccain.com](mailto:jackie.marcheschi@mccain.com) or visit our website at [www.mccainusa.com](http://www.mccainusa.com)



**New To Facility Management or Provide Services to FM Clients?**

IFMA's Essentials of Facility Management program is a great starting point. The 3 day interactive course is ideal for building and plant managers and supervisors, early career and transitioning FM professionals and vendors and suppliers of services to facilities.

**Essentials of Facility Management**

Location	Day(s)	Date(s)	Times
<b>Intro to Facility Management and Operations and Maintenance Workshop Series</b>			
Oakton College, Skokie Campus	Fri & Sat	9/11 - 9/12	8:30 a.m. - 4:30 p.m.
Kishwaukee College, Malta	Fri & Sat	11/5 - 11/6	8:30 a.m. - 4:30 p.m.
<b>Work Management in Facility Management Series</b>			
Oakton College, Skokie Campus	Fri & Sat	9/18 - 9/19	8:30 a.m. - 4:30 p.m.
Waubensee College, Aurora	Thurs & Fri	10/29 - 10/30	8:30 a.m. - 4:30 p.m.

**Have a Few Years of FM Experience or Work with FM Clients?**

IFMA's Facility Management Professional® (FMP®) Credential is a must-have credential for FM professionals and industry suppliers looking to increase their depth-of-knowledge in the core FM topics deem critical by employers. Enhance your knowledge and skills and gain immediate credibility with employers, clients and peers.

**IFMA's Facility Management Professional® (FMP®) Certification**

Location	Day(s)	Date(s)	Times
<b>Operations and Maintenance</b>			
NIU Hoffman Estates	Thurs & Fri	10/1 - 10/2	8:30 a.m. - 4:30 p.m.
<b>NEW ONLINE</b>	-	11/1 - 11/21	-
<b>Project Management</b>			
NIU Hoffman Estates	Thurs & Fri	10/22 - 10/23	8:30 a.m. - 4:30 p.m.
<b>NEW ONLINE</b>	-	12/1 - 12/21	-
<b>Leadership and Strategy</b>			
<b>NEW ONLINE</b>	-	10/1 - 10/21	-
NIU Hoffman Estates	Thurs & Fri	11/12 - 11/13	8:30 a.m. - 4:30 p.m.
<b>Finance and Business</b>			
<b>NEW ONLINE</b>	-	9/1 - 9/21	-
NIU Hoffman Estates	Thurs & Fri	12/3 - 12/4	8:30 a.m. - 4:30 p.m.

Have Several Years FM Experience?

**IFMA's Sustainability Facility Professional® (SFP®) Credential Program** is ideal for FM professionals playing a key role in creating, managing and operating sustainable facilities.

*(This program must be taken as a series and in sequence)*

**IFMA's Sustainability Facility Professional® (SFP®) Credential Program**

Location	Day(s)	Date(s)	Times
<b>Strategy and Alignment for Sustainable Facility Management</b>			
NIU Hoffman Estates	Thurs & Fri	10/22 - 10/23	8:30 a.m. - 4:30 p.m.
<b>Managing Sustainable Facilities</b>			
NIU Hoffman Estates	Thurs & Fri	11/12 - 11/13	8:30 a.m. - 4:30 p.m.
<b>Operating Sustainable Facilities</b>			
NIU Hoffman Estates	Thurs & Fri	12/3 - 12/4	8:30 a.m. - 4:30 p.m.

**IFMA's Certified Facility Manager Exam Preparation Plus Workshop** focuses on helping candidates understand the exam methodologies and apply critical thinking skills in preparation for the CFM® examination.

**IFMA's Certified Facility Manager Exam Preparation Plus Workshop**

Location	Day(s)	Date(s)	Times
<b>CFM® Exam Prep Workshop</b>			
NIU Naperville Regional Center	Fri & Sat	1/22/16 - 1/23/16	8:00 a.m. - 5:00 p.m.

To learn more, visit [www.fm.niu.edu](http://www.fm.niu.edu) or call 815-732-6249

## Smoke on the Water—Understanding the Process and Pitfalls of Fire Damage Restoration

**SMOKE ON THE WATER** is a one-day course that explains the processes involved in fire damage mitigation and restoration. It also illustrates how property managers, insurance companies, and restoration professionals can work together to provide building owners and tenants with rapid, responsive, technically accurate procedures for loss mitigation on fire damage claims. Following the mitigation techniques described in this course ensures fast, accurate, and cost-effective services are provided to customers.

The **SMOKE ON THE WATER** program offers instructor-led classroom study, group discussion, and a live fire restoration demonstration. Participants will have an opportunity to witness JCR's SmokeHaus structure in action and observe the various techniques employed to assess, mitigate, and fully restore building materials and personal contents to pre-loss condition. Classroom discussions focus on the public health and safety issues associated with fire restoration situations. By the end of the day, attendees will have a greater understanding of why and how fire damage should be addressed by professionals.

The Continuing Education programs offered by J.C. Restoration, Inc. demystify the many techniques and technologies utilized in emergency mitigation, disaster restoration, and reconstruction. Courses begin with a review of the basics, gradually becoming more in-depth and informative - covering advanced technologies and standards as outlined by industry experts such as the Institute of Inspection, Cleaning and Restoration Certification (IICRC) and Restoration Industry Association (RIA). Class participation and hands-on demonstrations further illustrate the advanced techniques that save both downtime and money throughout the claims process.

## Smoke on the Water—Understanding the Process and Pitfalls of Fire Damage Restoration

J.C. Restoration, Inc. is a leader in fields of disaster mitigation, restoration, and reconstruction. A certified specialist leads each aspect of the business with staffs of highly trained, specialized technicians.

### WHO SHOULD TAKE THIS COURSE?

#### PROPERTY MANAGERS

who need educated answers to questions from their various stakeholders - owners, residents, and tenants.

#### BUILDING ENGINEERS

who want to know where to draw the line between issues they can properly address themselves and issues that require a restoration contractor.

#### FACILITY MANAGERS

who keep their corporate and institutional campuses up and running with minimal disruption.

#### RISK MANAGERS

who help their clients develop comprehensive disaster preparedness plans that will minimize business interruption and limit recovery expense should the unexpected occur.

#### INSURANCE ADJUSTERS

who are responsible for approving mitigation and restoration costs for re damage claims

Register:

<https://jcr.webconnex.com/sow-pfm>

Questions? Call 800.956.8844

or

[cec@jcrestoration.com](mailto:cec@jcrestoration.com)

## Purchasing Agent

Responsible for raw material purchases made by the organization. Evaluates and approves vendors, reviews and compares product specifications, analyzes USDA commodity market prices, and authorizes purchase orders for material goods. **Very organized** and pays close attention to detail. Capable of learning and working with ERP systems as a primary method of daily work management. Requires a **bachelor's degree, preferably in Business**, with 3 years experience in the field desired. Familiar with general business concepts, practices, and procedures. Relies on **common sense judgment** to plan and accomplish goals. Performs a variety of tasks and eager to learn new processes. May lead and direct the work of others. Reports to a manager.

### About Rose Packing Company—Est. 1924:

For 90 years, Rose Packing has been producing the highest quality products and providing them to both domestic and international markets. Our line has expanded to include the finest, value-added pork, turkey, chicken and beef products in the marketplace.

First known for our Canadian Bacon, we've put the same attention to quality and flavor in all of our products. With delicious choices and a wide array for any appetite, our Hams, Turkey, Breakfast Sausages, Ethnic Sausages, Chicken and Beef Burgers, Pizza Toppings or Baby Back Ribs will satisfy everyone at the table.

<https://www.ziprecruiter.com/jobs/rose-packing-company-e4c7c210/purchasing-agent-c301ab0d>



# September 2015

Sun	Mon	Tue	Wed	Thu	Fri	Sat
		1	2	3	4	5
6	7	8	9	10	11	12
13	14	15	16	17	18	19
20	21	22	23	24	25	26
27	28	29	30			

## Schedule of Events

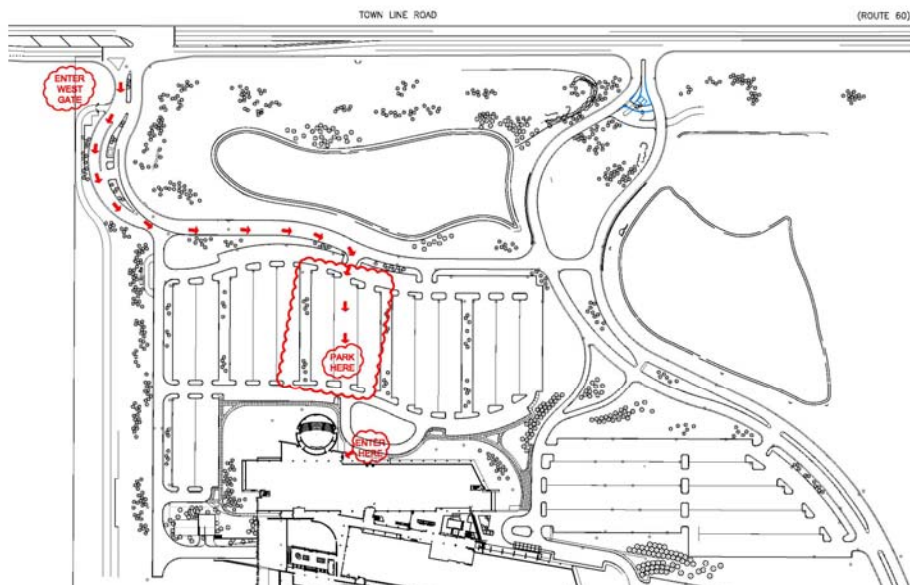
- September 1—Grainger
- September 10—Golf Outing
- October 7—9 World Work Place

### Directions to Grainger:

From Chicago:

Take I-90 west, merge onto I-294 north. Take the IL-60 Town Line Road exit. Keep left to Vernon Hills/Mundelein. Turn left onto IL-60. Turn left onto Grainger Parkway.

Map for parking—pictured to the right.





**IFMA™ Northern Illinois Chapter**  
International Facility Management Association

**To provide exceptional education, networking, career development, and leadership opportunities that support and advance the Facility Management profession in Northern Illinois.**

**Sponsorship opportunities are available, please contact our chapter administrator at the e-mail listed to the left for complete details!**

Northern Illinois IFMA  
PO Box 4893  
Buffalo Grove, IL 60089-4893  
Phone: 847-821-8243  
Fax: 847-821-8248  
E-mail: [chapteradministrator@ifmani.org](mailto:chapteradministrator@ifmani.org)



## 2015—2016 IFMA NI BOARD

<p><b>President</b> Ann Del Fiacco OfficeMax Workplace 630-652-8154</p>	<p><b>Archivist</b> Mike Jurczykowski Chicago Records Management 847-678-0002</p>	<p><b>Education</b> Joe McCarthy, CFM Pareto Building Improvement 708-344-4355</p>	<p><b>Program</b> Ann Del Fiacco OfficeMax Workspace Interiors 630-652-8154</p>
<p><b>Vice President</b> Laura Ingram Ingram Enterprises 847-821-1075</p>	<p><b>Associate</b></p>	<p><b>Hospitality</b> Kevin Tiernan Rose Paving 708-459-5538</p>	<p><b>Council Liaison</b></p>
<p><b>Secretary</b> Brett Ratajczak, FMP Awana 630-339-3214</p>	<p><b>Awards</b> Doug Kettel, CMPP, LEED AP Schaumburg Park District 847-985-2115</p>	<p><b>Membership</b> Bob Ditsch Diebold 630-751-9840</p>	<p><b>Seminar</b> Doug Kettel, CMPP, LEED AP Schaumburg Park District 847-985-2115</p>
<p><b>Treasurer</b> Kevin Boyd, FMP Chicago Food Depository 773-843-6703</p>	<p><b>Career Services</b> Dianna Rudd The Rudd Executive Search 847-776-0900</p>	<p><b>Networking</b> Bill Lewis, CFM Northern Trust 312-451-6716</p>	<p><b>Sustainability Liaison</b> Kevin Boyd, FMP Chicago Food Depository 773-843-6703</p>
<p><b>Advisor</b> Scott Solverson b2b Konnections 630-991-1749</p>	<p><b>Community Services</b> David Biggus Mimosa Interior Landscape 847-545-1800</p>	<p><b>Newsletter</b> Jan Wemple Moore Landscape 847-564-9393</p>	<p><b>Webmaster</b> Gerard Zawislak, FMP Cummins Allison Corp 847-299-9550 x 6460</p>